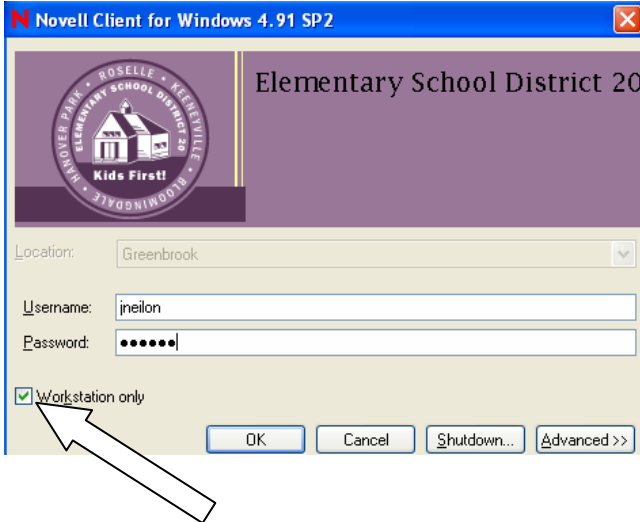


Wireless access outside of the district.

**-Make sure you log into the laptop at least one time on our network.
This will create an account on that laptop.**



FROM HOME

-Check the box labeled Workstation only.

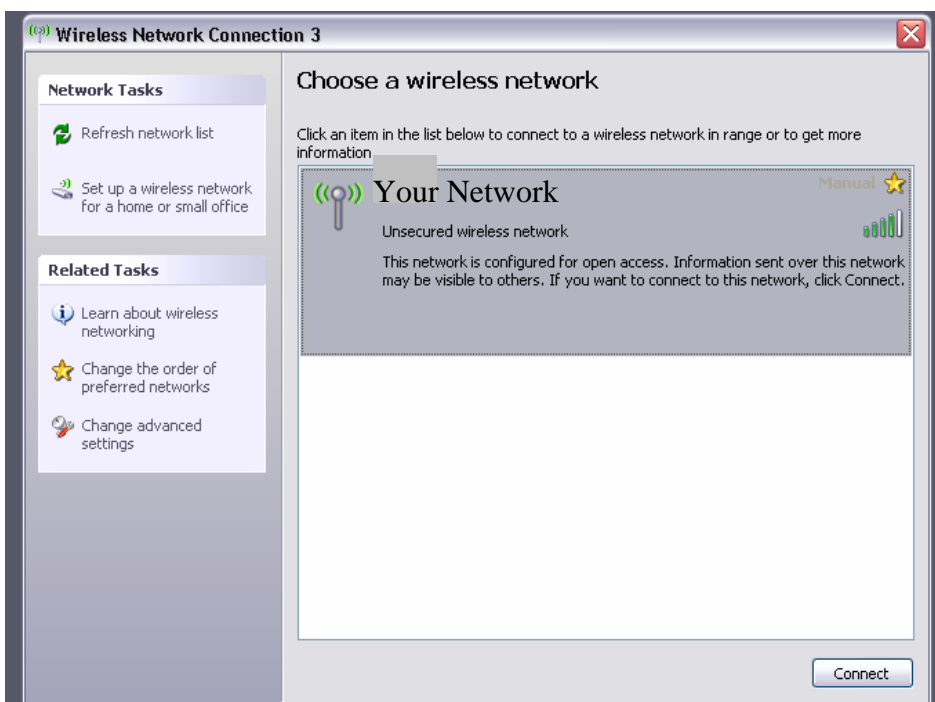
-Enter your normal username and password as you would use at school.

-Click OK.



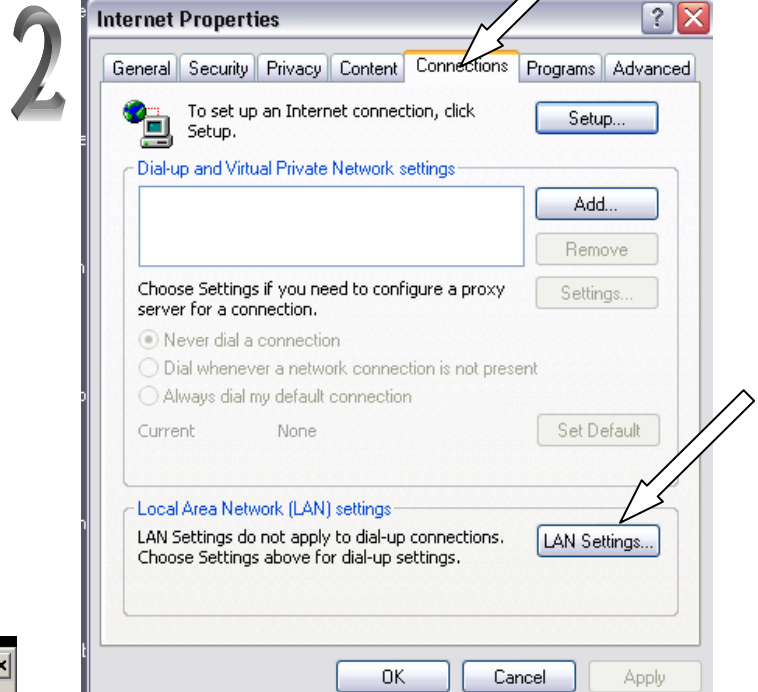
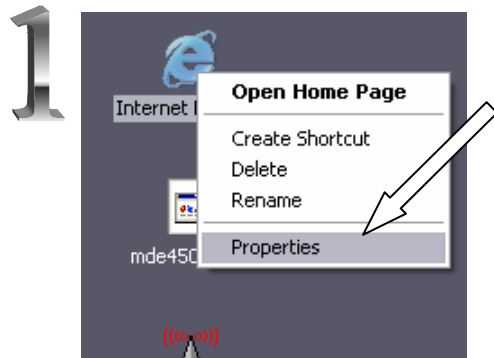
On the bottom right hand corner of your screen there is an icon of a computer monitor with a few signal waves next to it. If it has a red X next to it, you are not connected.

To connect to a wireless access point, double click the wireless icon, and a box **similar** to the picture below will pop up (Every wireless hotspot will have a different name.). Double click on the wireless access point you want to connect to. Ours is dist20 for all wireless buildings. Once you have connected to a wireless network once, it will always reconnect you.

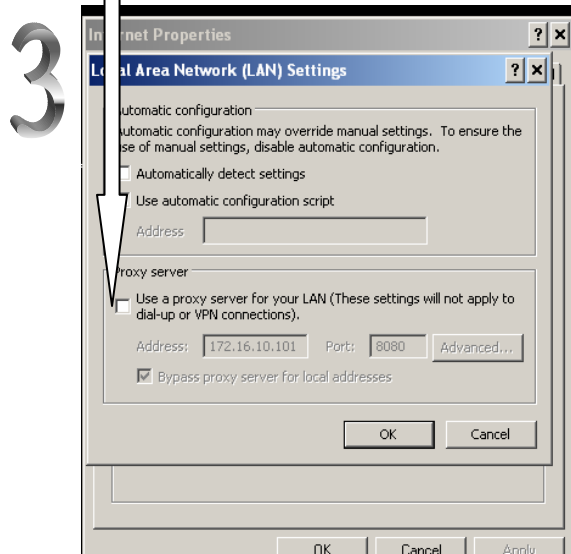


To use the internet, you must do the following. This turns off a District 20 network setting, and enables the computer to go online.

1. On your desktop, right click on the big blue “e” and click on properties
2. Click on “Connections,” then click on LAN Settings



3. **UNCHECK** the “Use a proxy...”



You will need to repeat these 3 steps every time you use this laptop outside of District 20.